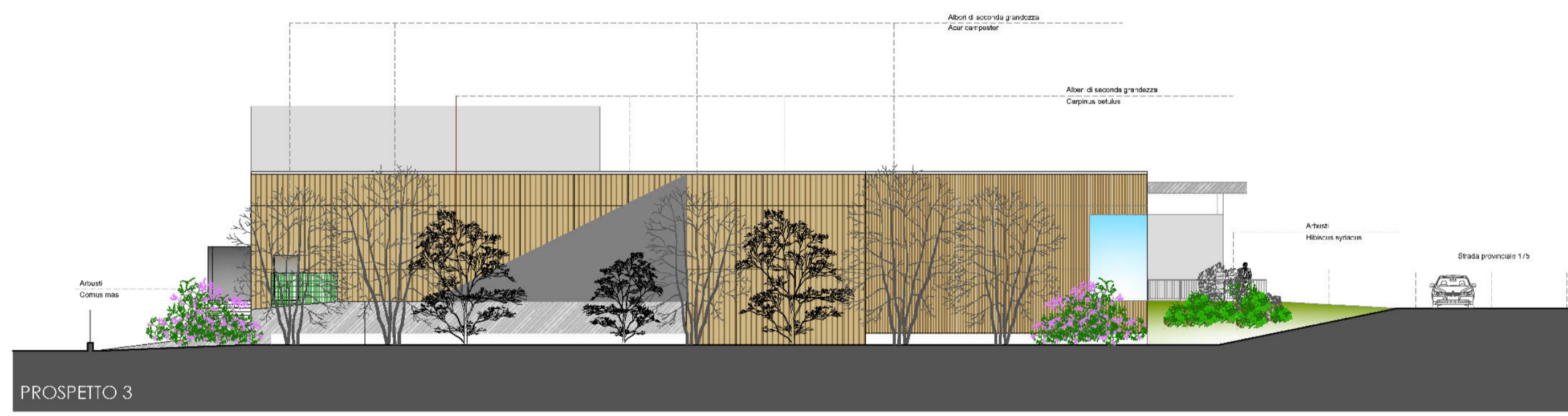


PROSPETTO 1



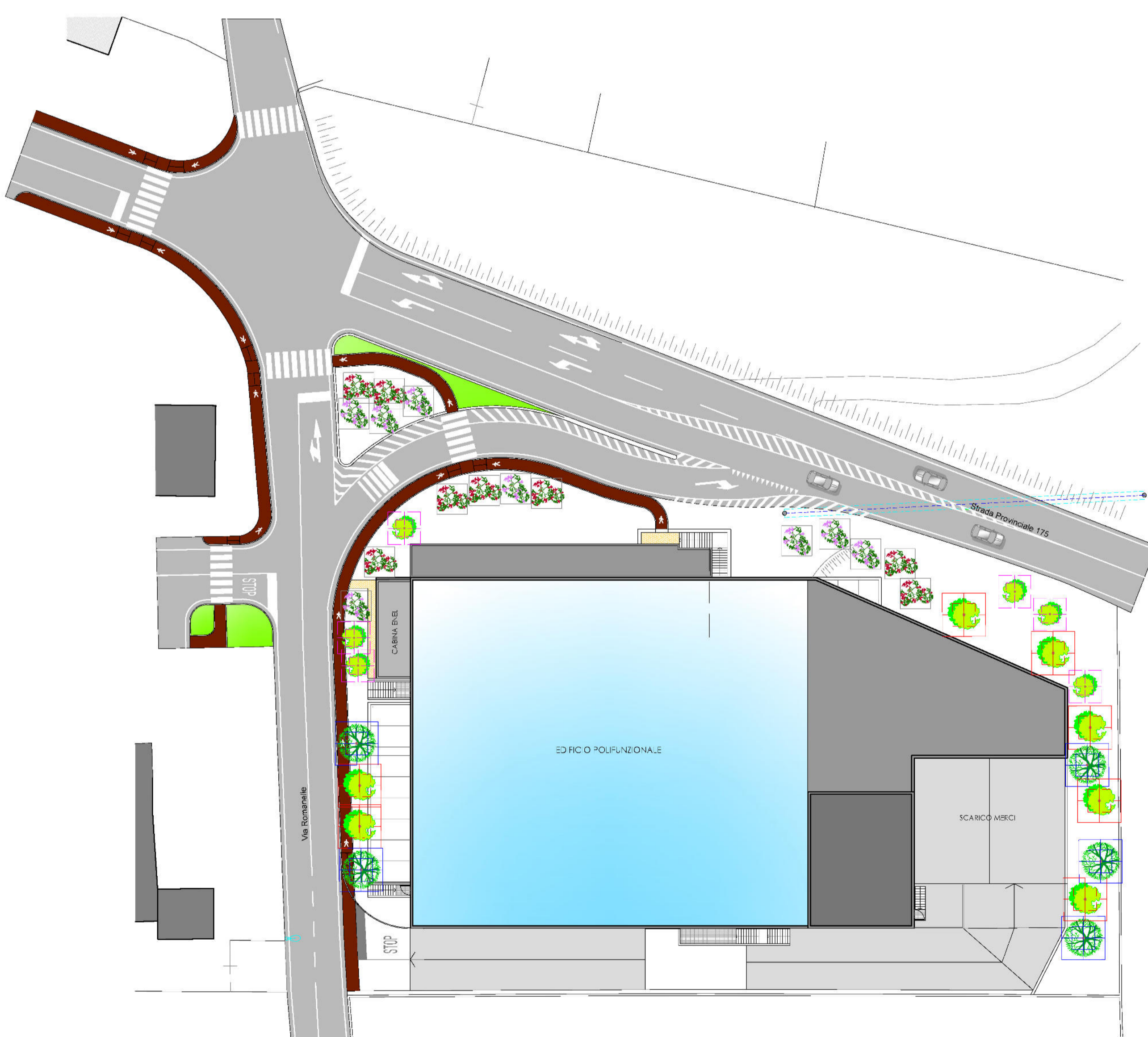
PROSPETTO 2 - fronte Strada Provinciale 175

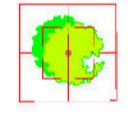
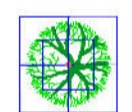
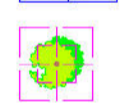




PROSPETTO 3



PROSPETTO 4 - fronte via Romanella



- ESSENZE VERDI A PROGETTO**
-  Alberi di seconda grandezza
Carpinus betulus
 -  Alberi di seconda grandezza
Acer campestre
 -  Alberi di terza grandezza
Quercus pubescens
 -  Arbusti
Hibiscus syriacus
 -  Arbusti
Cornus mas

Comune di **ALMENNO SAN SALVATORE**

Committente
S.C. EVOLUTION spa

Tavola
MITIGAZIONI AMBIENTALI

Data
22 Febbraio 2019

Scala 1:200

Tavola

07

PROGRAMMA INTEGRATO di INTERVENTO
Ambito via Romanelle

Architettura
Paolo Chezzi

Via Roma, 2 - 24070 Montebelluna (VI)
Tel. 0445-464582 - Fax 0445-464579
Email: p.chezzi@evolutionspa.it